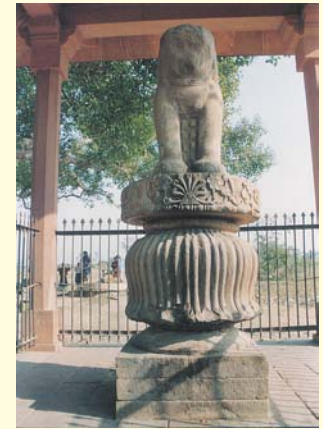
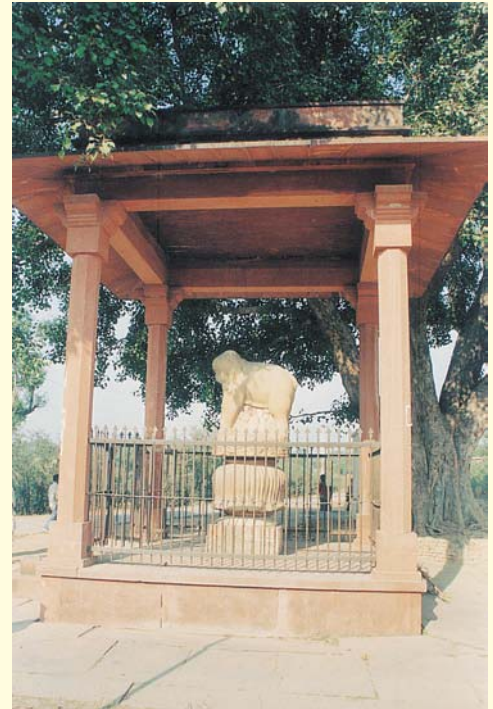


Sankisa, Farrukhabad

Uttar Pradesh



Located about 37 km west of Fatehgarh, Sankisa is mentioned in Ramayana, Mahabharata and other Sanskrit and Pali texts. The site has been identified as the place where Buddha is said to have performed the decent from the *trayastrinsa* heaven by a ladder of gold or gem. It is an important place of Buddhist pilgrimage and has been excavated by the Archaeological Survey of India from time to time .



Contributions solicited in the range of Rs. 20 - 50 Lakhs for following activities:

1. Construction of the dwarf wall and grill fencing.
2. Landscaping and gardening
3. Development of tourist movement plan and pathways
4. Tourist amenities.
5. Land acquisition.
6. Scientific clearance to expose buried structures of the ancient city.



Residency, Lucknow



Uttar Pradesh



The site of the Residency belonged to Sheikhzada Nawab Asafuddaula who started the construction of Residency in the year AD 1775 for the British resident and his staff. It was completed by Nawab Saadat Ali Khan in AD 1800.

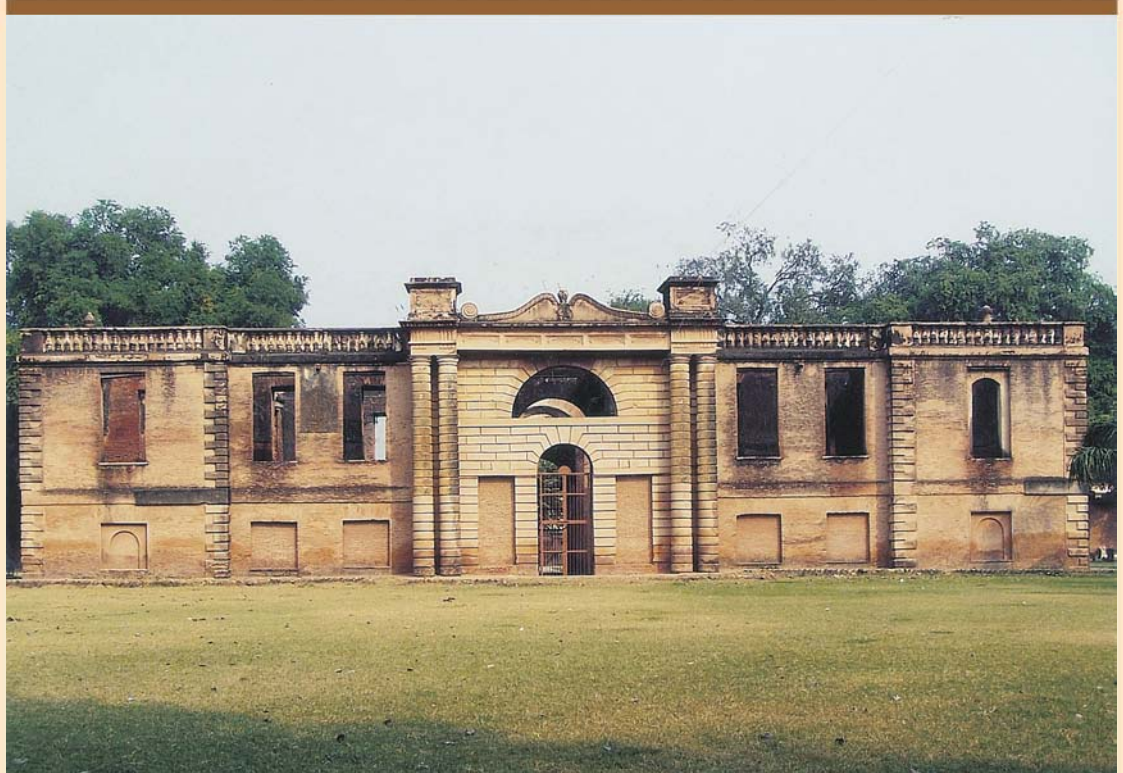
These structures suffered heavy damages due to constant shelling and counter shelling during the first war of Indian Independence in 1857. Some were completely razed to the ground and now in ruins. To understand the clear picture of the Residency, an excavation was carried out which has brought to light a number of buried structures including the well planned sewer system, besides remains of the material culture of that period. The 1857 Memorial Museum has been set up here to depict an accurate presentation of the First War of Independence of 1857 in Awadh.



Contributions solicited in the range of Rs. 25 - 100 Lakhs for following activities:

1. Structural conservation
2. Tourist amenities

Dilkusha Garden, Lucknow



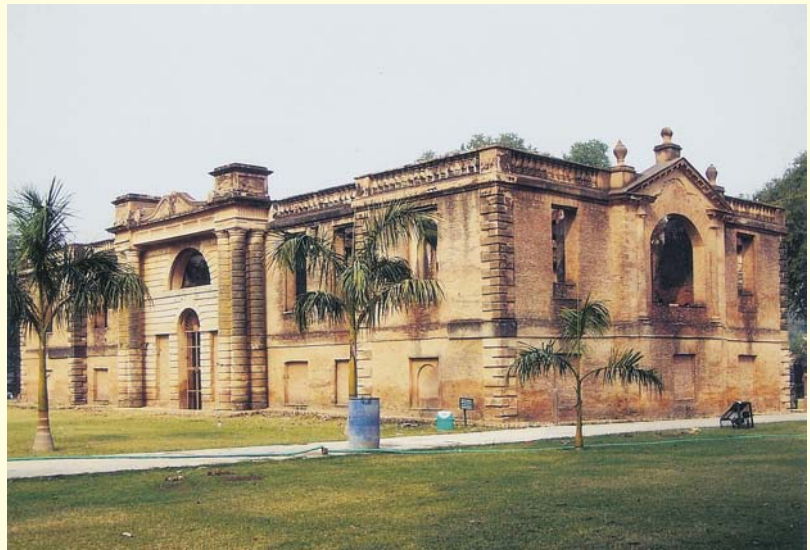
Uttar Pradesh



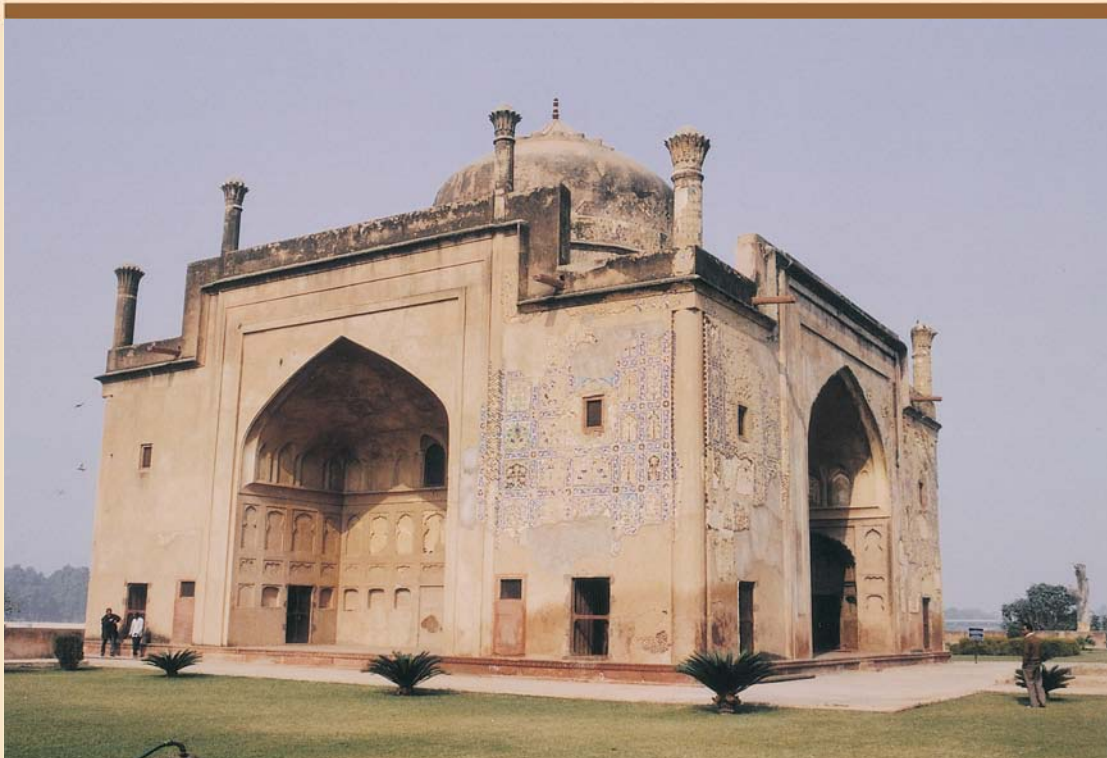
Dilkusha Kothi and garden is located on the outskirts of the old Lucknow city which now stands in the cantonment area. It was built by Gore Ouseley, a friend of the Nawab Saadat Ali Khan around AD 1800 and expanded during the reign of the Nawab Nasir-ud-din Haider (AD 1827-1937). It was initially used as a hunting lodge and subsequently converted into a summer resort.

Contributions solicited in the range of Rs. 25 - 60 Lakhs for following activities:

1. Structural conservation
2. Tourist amenities



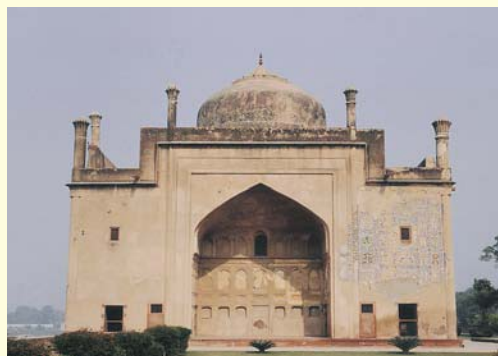
Chini ka Rauza, Agra



Uttar Pradesh



Chini ka Rauza is the tomb of Mulla Shukrullah Shirazi or “Afzal Khan Alami”. He was the Vazir in the court of Emperor Shah Jahan. The popular name of Chini-ka-Rauza has the roots in its unique glazed tile decoration. The tomb stands on the bank of river Yamuna in between Ram Bagh and Itimad-ud-Daulah’s tomb. Most probably, the Tomb was constructed between AD 1630 to 1639 during the life time of the builder. The lotus pond of the western façade testifies the influence of Taj Mahal’s architecture on Chini-ka-Rauza. The kiosk is located at the north western corner of the garden enclosure. It is a three storied structure of brick with red sandstone encasement. The kiosk is crowned by a beautiful cupola, once embellished with enameled tiles and carvings of geometrical and floral designs.

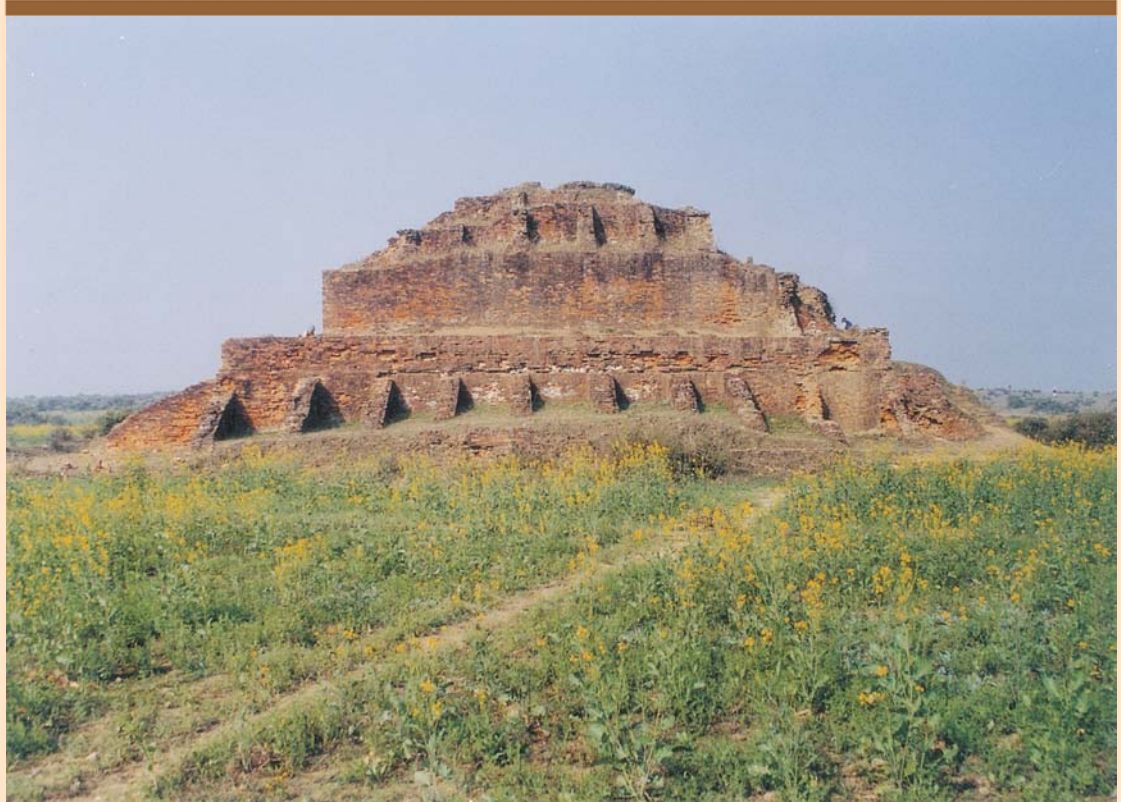


Contributions solicited in the range of Rs. 25 - 50 Lakhs for following activities:

1. Conservation of monuments.
2. Environmental development.
3. Providing tourist facilities.



Fort & Excavated Remains, Ahichchhatra, Ramnagar, Bareilly



Uttar Pradesh



The ruins at Ramnagar or Ahichchhatra consist of an ancient fortress spread over a large area covering several kilometers. The enclosed walls of the fort form an irregular right angled triangle. The fort has thirty-four bastions, a few have been built by a Rohilla chieftain called A.U. Mohammed Khan. Human habitations started here about three thousand years before and since then this place has been occupied continuously.

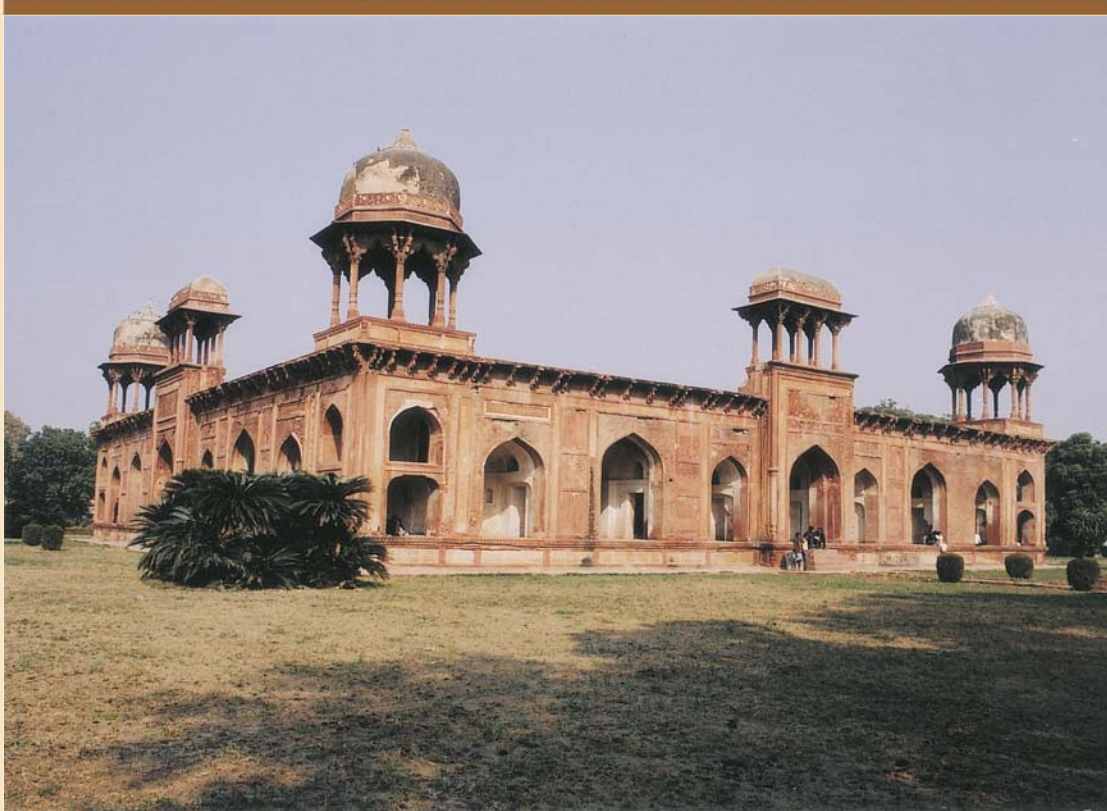
The site at Ramnagar or ancient Ahichchhatra represents extensive mounds of various sizes. The highest mound rises to a height of 23 m from the surrounding plains. The place is known as Ahichchhatra and Adhicchatra in ancient literature, the capital of North Panchala. Excavations here brought to light a *stupa* and a temple and also revealed a cultural deposit ranging from Ochre Coloured Pottery Period (before circa 1200 BC) onwards to the medieval period.



Contributions solicited in the range of Rs. 50 - 75 Lakhs for following activities:

1. Conservation of monuments.
2. Environmental development.
3. Providing tourist facilities.

Mariam's Tomb, Sikandra, Agra



Uttar Pradesh



Mariam's Tomb is located on the left side of Agra-Mathura Road to the west of Akbar's Tomb and was built by Sikander Lodhi in AD 1495. Additions were made in AD 1623. It is a beautiful architectural structure with intricate details in red sandstone of the Late Sultanate period.



Contributions solicited in the range of Rs. 20 - 70 Lakhs for following activities:

1. Structural conservation.
2. Landscaping and gardening
3. Development of tourist movement plan and pathways.
4. Tourist amenities such as drinking water and toilet facility.
5. Land acquisition.

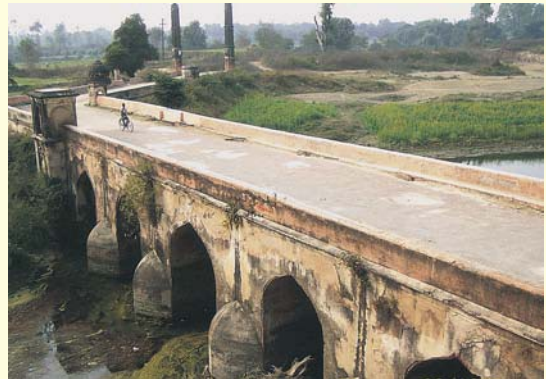


Behta Bridge, Lucknow

Uttar Pradesh



The bridge over the Behta River and the Siva temple were constructed by Maharaja Tikait Rai between AD 1786 and 1788 during the reign of Nawab Asaf-ud-daula (AD 1775-1798). The temple is built of lakhauri bricks with lime plaster and has stucco decorations. This magnificent temple is octagonal in plan with fluted dome, erected on a slightly raised platform within an enclosure wall.



Contributions solicited in the range of Rs. 20 - 30 Lakhs for following activities:

1. Conservation of monuments.
2. Environmental development.
3. Providing tourist facilities.

The arched bridge is similar to the temple in architecture. It is one of the oldest bridges of Lucknow, having two octagonal pillars in the shape of a triple storied minaret on either end with seven octagonal and rectangular sized pillars on both sides. There are two Persian marble tablet inscriptions on the pillars with the date and the name of the builder.



Bibiapur Kothi, Lucknow



It was built by Nawab Asaf-ud-Daula (AD 1775-97) and the design was prepared by the French General Claude Martin who was a courtier in the court of Awadh. This three storied building was specially built for entertaining important emissaries of the British Government. Whenever the change of British Resident to the court of Awadh took place, the new incumbent used to reside here till he was formally placed as a British Resident in the Residency of Lucknow.

The monument is built of lakhauri bricks in lime plaster and has stucco decorations. This well ventilated two storied building consists of large halls with high ceilings, spiral staircases and imposing double columns showing French style of architecture. The large hall is decorated with blue coloured tiles, specially brought from France. The building was provided with well ventilated windows.



Uttar Pradesh



Contributions solicited in the range of Rs. 25 - 70 Lakhs for following activities:

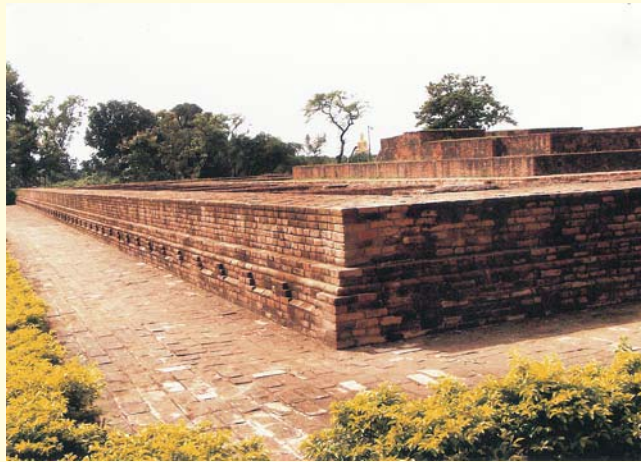
1. Conservation of monuments.
2. Environmental development.
3. Providing tourist facilities.



Excavated Site, Sravasti



Uttar Pradesh



Sravasti was the capital of the ancient Kosala kingdom. It is located on the bank of river Rapti. During the days of Buddha, Sravasti reached the peak of its prosperity under the able rule of king Prasenjit. The *Mahaparinirvana-Sutta*, mentioned it as one of the six important cities where Buddha had a large following.

Remains of Sravasti are situated at two nearby places called Sahet and Mahet. Sahet represents the famous Jetavana area and was subjected to excavations. Remnants of temples, *stupas* and monasteries have been exposed here. The earliest available relics are few *Kushana* structures and images.

Mahet, represents the fortified city of Sravasti and this huge area is covered by mud ramparts. The ruins of two massive brick structures, known as *Pakki-Kuti* and *Kachchi Kuti* are located here. It is believed that these were erected on the spot where the *stupa* of Anathpindaka once stood.

Contributions solicited in the range of Rs. 50 - 75 Lakhs for following activities:

1. Conservation of monuments.
2. Environmental development.
3. Providing tourist facilities